

# HARKEN®

## INSTRUCTIONS

### 1567/1643 Stand-Up Toggles

Fits Midrange Cars: 1624/1625/1628/1629/T27 Series

N15W24983 Bluemound Rd • Pewaukee, WI 53072-4974 USA.

Tel: (262) 691-3320 • Fax: (262) 701-5780

Web: harken.com • Email: harken@harken.com



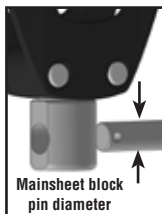
**Strictly follow all instructions to avoid an accident, damage to your vessel, personal injury or death. For additional safety information see [www.harken.com/manuals](http://www.harken.com/manuals).**



1567



1643



Mainsheet block  
pin diameter

**1567** - use on cars with car mounted control blocks.

**1643** - has ears to attach control blocks to toggle.

#### 1567, 1643 Midrange stand-up toggles fit these Harken blocks:

Mainsheet Blocks	Size and Configurations	Pin diameter
Element*	45 mm singles, fiddles, doubles, triples	6 mm 1/4"
	60 mm singles, fiddles	6 mm 1/4"
	60 mm doubles, triples	8 mm 5/16"
Carbo	75 mm singles, fiddles	6 mm 1/4"
	75 mm doubles, triples	8 mm 5/16"
Classic Small Boat	3" single, fiddle	6 mm 1/4"
Midrange	All configurations	8 mm 5/16"
Black Magic	57 mm single	6 mm 1/4"
	57 mm doubles, triples	8 mm 5/16"

\*1561 and 1638 toggles have increased spacing to fit Element block swivel posts. Element blocks do not fit toggles supplied before 2019.

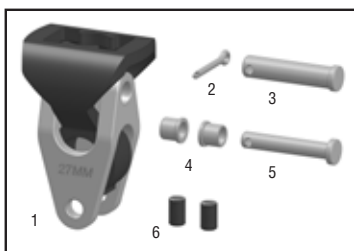
Control Blocks - 1643	End Controls	Purchase
2650 - Deadend on end control	1631, E2730	2:1
2650 - Deadend on block	1632, 1633, E2740, E2746	3:1
342/2638 - Deadend on control	1632, 1633, E2750, E2756	4:1

These are a sample of combinations. Other combinations are available.

### Parts List

#### 1567

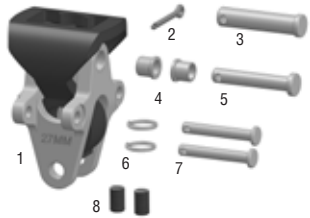
1 Toggle with elastomer stand-up assembled	
2 Large cotter pin	HFS181
3 8 mm (5/16") clevis pin	H-80166
4 Bushing - 6 mm (1/4") (2)	H-80167
5 6 mm (1/4") clevis pin	H-80165
6 Replacement set screws (2)	HFS971
Elastomer replacement	MP-1838



## Parts List (continued)

1643

1	Toggle with elastomer stand-up assembled	
2	Large cotter pin	HFS181
3	8 mm (5/16") clevis pin	H-80166
4	Bushing - 6 mm (1/4") (2)	H-80167
5	6 mm (1/4") clevis pin	H-80165
6	Split rings (2)	MS-002
7	5 mm (3/16") clevis pins (2)	H-35241A
8	Replacement set screws (2)	HFS971
	Elastomer replacement	MP-1838



## Install Toggle on Car

### Tools

- Small slotted screwdriver
- Icepick
- Phillips screwdriver



1. Remove control blocks or swivel ears on windward assembly.



2. Remove two (2) plastic set screws located on top of car.



3. Use icepick to push pivot pin to one side. Remove shackle.

4. Install one (1) plastic set screw so it is flush with top of car.



5. Insert stand-up device so large flat end of rubber is up. Press down and push pivot pin into place.



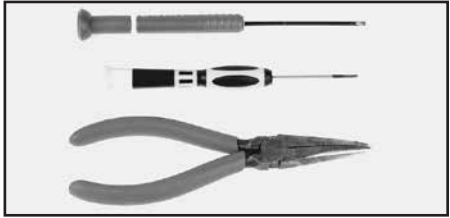
6. Secure with set screw or swivel ear screw. Assemble control blocks using blue Loctite® on screws.

**Note:** Use Loctite on stainless screws only. Do not use on plastic set screws.

## Install Mainsheet Block on Toggle

### Tools

- 2 small slotted screwdrivers (Used for 6 mm (1/4") clevis pin only)
- Needle-nose pliers

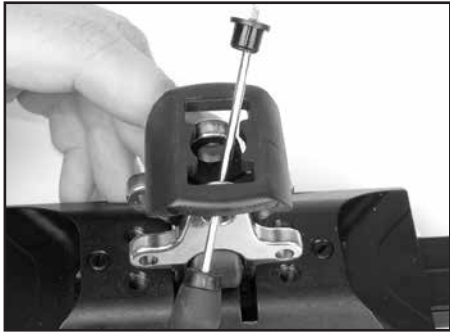


### 6 mm (1/4") clevis pin

1. Load plastic bushings from inside toggle.

**Tip:** Slip small screwdriver into hole and use it as a guide to insert SS bushing.

2. Slip 6 mm (1/4") clevis pin through toggle and secure with small cotter pin.



### 8 mm (5/16") clevis pin

1. Remove block shackle. Insert block.
2. Insert 8 mm (5/16") clevis pin through toggle.



### Both clevis pins

Secure with cotter pin as shown.



## Install Control Blocks on 1643 Toggle

### Use 5 mm (3/16") clevis pins

1. Place block headpost between tangs.

**Note:** If you are using double control blocks, add the U-Lock to align blocks and keep them from swiveling.



## Install Control Blocks on 1643 Toggle (continued)

2. Install the pins and split rings. Separate end of ring and spin completely in place like a key ring.



## Replacing Elastomer Stand-Up Device

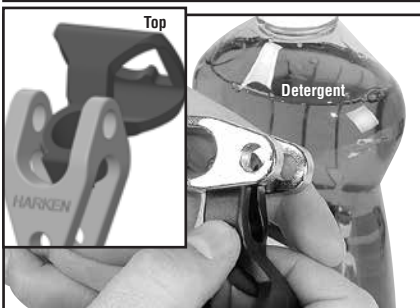
1. Remove stainless toggle from car.
2. Use pliers to squeeze circular base of stand-up device; work device up and out the side.
3. Install replacement piece by squeezing circular base of stand-up device and inserting it from side of toggle.



**IMPORTANT!** Make sure toggle and elastomer are right side up. Refer to "Harken" on side of toggle.

**Note:** Do not use pliers to squeeze new stand-up device while installing. This will damage part.

**Tip:** Use soap on circular portion of stand-up device to ease installation.



## Inspection

Frequently inspect shackles and control block fittings for signs of fatigue and replace as necessary. Make sure every installation includes Harken track end stops. Arrange control tackle so cars do not hit end stops under load.

## Maintenance

**Traveler Cars:** Clean by frequently flushing with fresh water. Periodically clean car by squirting a detergent/water solution into center openings. Roll car back and forth to distribute evenly then flush bearings with fresh water.

Do not use spray lubricants because ball bearings may skid, not roll. Apply one to two drops of McLube® OneDrop™ to ball contact surfaces of track. Roll car back and forth through OneDrop several times to distribute onto bearings. Wipe remaining OneDrop off track. OneDrop is preferred but you can also use one to two drops of a light machine oil; too much oil attracts dirt.

**Track:** Clean with detergent and water.

**Important!** Exposure to some teak cleaners and other caustic solutions can result in discoloration of part and is not covered under the Harken warranty.



## Warranty

For additional safety, maintenance and warranty information see [www.harken.com/manuals](http://www.harken.com/manuals) or the Harken catalog.