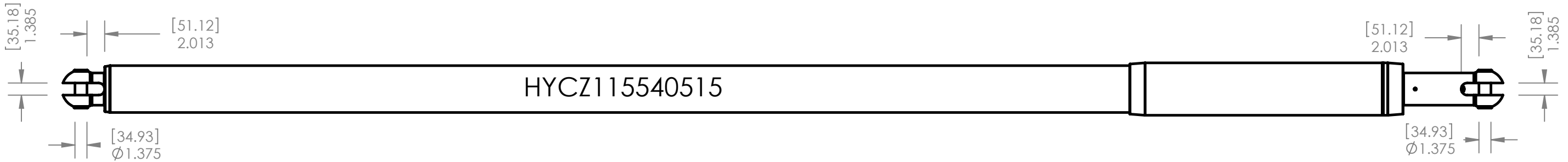
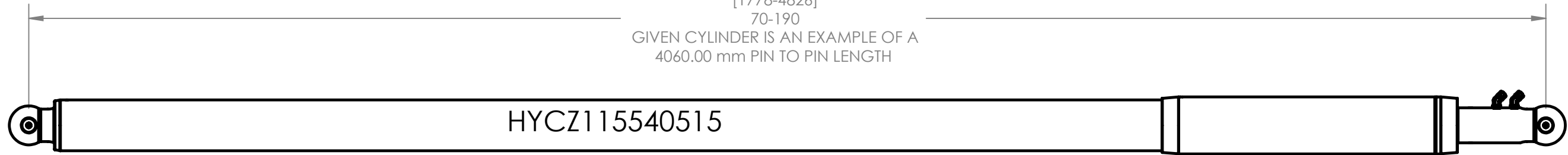
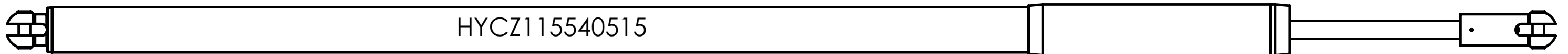
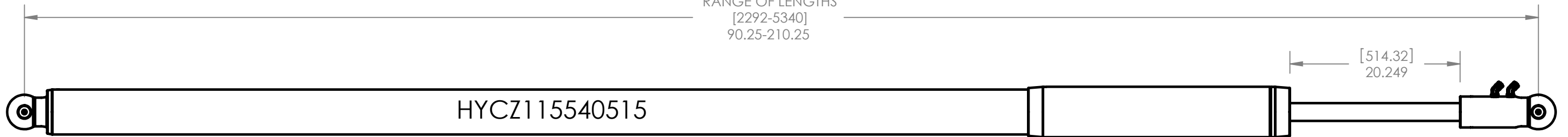


RANGE OF LENGTHS
 [1778-4826]
 70-190
 GIVEN CYLINDER IS AN EXAMPLE OF A
 4060.00 mm PIN TO PIN LENGTH



RANGE OF LENGTHS
 [2292-5340]
 90.25-210.25



HARKEN
 INCORPORATED
 1251 E. Wisconsin Avenue
 Pewaukee, Wisconsin 53072
 262-691-3320
 Fax: 262-691-3807

ALL DIMENSIONS IN INCHES	
TOLERANCES (EXCEPT AS NOTED)	
DECIMAL ±	ANGULAR ±
FRACTIONAL ±	HOLE DIAMETER ±

ASSY - 115 X 54 X 515		DRAWING NO.
DOUBLE-ACTING VANG HYD CYLINDER		HYCZ115540515
DRAWN BY GSW	MATERIAL VARIOUS	HYCZ115540515BCC4060 / HY
CHK'D	FINISH -	SCALE 1:12
		DATE 3/5/2010

© HARKEN YACHT EQUIPMENT DIVISION OF HARKEN, INC.
 The designs, constructions, arrangements, disclosures and devices illustrated in presentations bearing this note are the property of Harken, Incorporated, Pewaukee, Wisconsin and are submitted in confidence with the understanding that such material shall not be utilized in any way by any party without prior written consent from Harken, Incorporated.